

HARDWARE INTEGRATION NOTE

DS-K1T673DX

Facial Biometric Reader with digital QR Code Reading

The K1T673DX is a hi-end biometric facial reader manufactured by Hikvision. It has been designed for hi-speed contactless access control applications where the biometric function ensures the person using the credential is present.

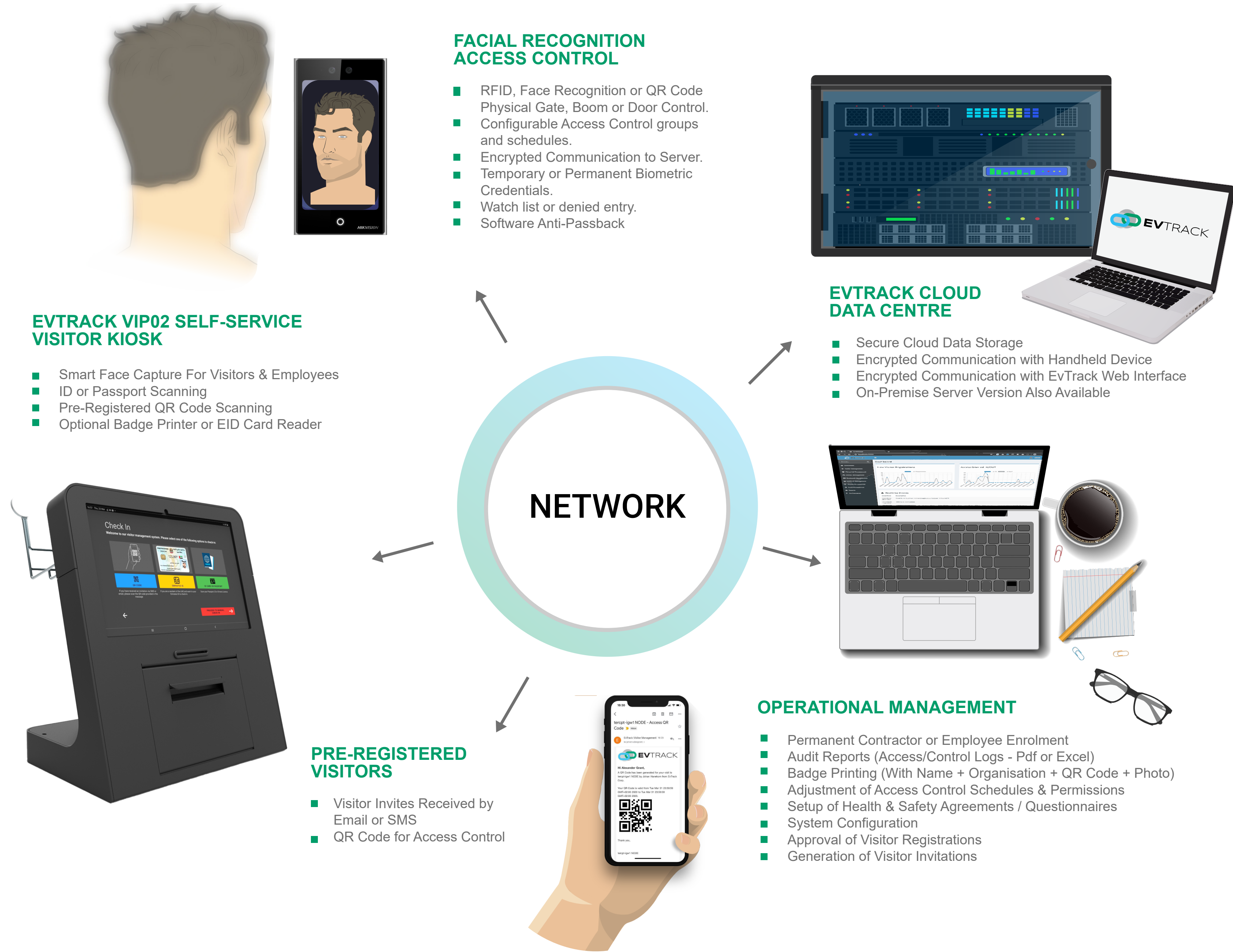
Featuring a dual megapixel cameras with an advanced facial recognition algorithm it has support for 10'000 face credentials stored directly on the device (edge-based). Suitable for networked IP operation it features an embedded processor, network interface, RFID card/tag reader and a 7" touch screen display interface.

The device is fully supported by the EvTrack Eco System allowing access control by visitor or employee through facial recognition as well as RFID card/tag or digital QR code. Employees can be enrolled using the EvTrack web portal, via the EvTrack Kiosk or via the EvTrack web registration link. For temporary access control applications, visitor photos can be captured using the EvTrack Kiosk which is then transparently uploaded to the facial recognition terminal for instant use. After the default visitor period has expired or the use limit has been reached, the visitor's face credential is removed from the device but retained in EvTrack's database until the data is set to expire from EvTrack.

Features

- ✓ High Speed Facial Recognition with Up to 10'000 Onboard Face Credentials
- ✓ Dual 2 Megapixel Cameras with Anti-Spoofing & IR and/or Visible Illumination
- ✓ 0.3 to 3 Mtr Facial Recognition Range with 1:N or 1:1 Matching
- ✓ Facial Recognition Speed = 0.2 Second
- ✓ 7" Touchscreen Display
- ✓ Stand-Alone Operation with Edge Storage
- ✓ Digital QR Code Reading
- ✓ Support For a Single External Card Reader via Wiegand
- ✓ 10/100/1000 Mbps Ethernet Interface
- ✓ IP65 Weatherproof
- ✓ 12VDC or 24VDC @ 2A
- ✓ 110.5 mm × 209.2 mm × 24 mm (LxWxD)

System Architecture



Access Control Workflow

