

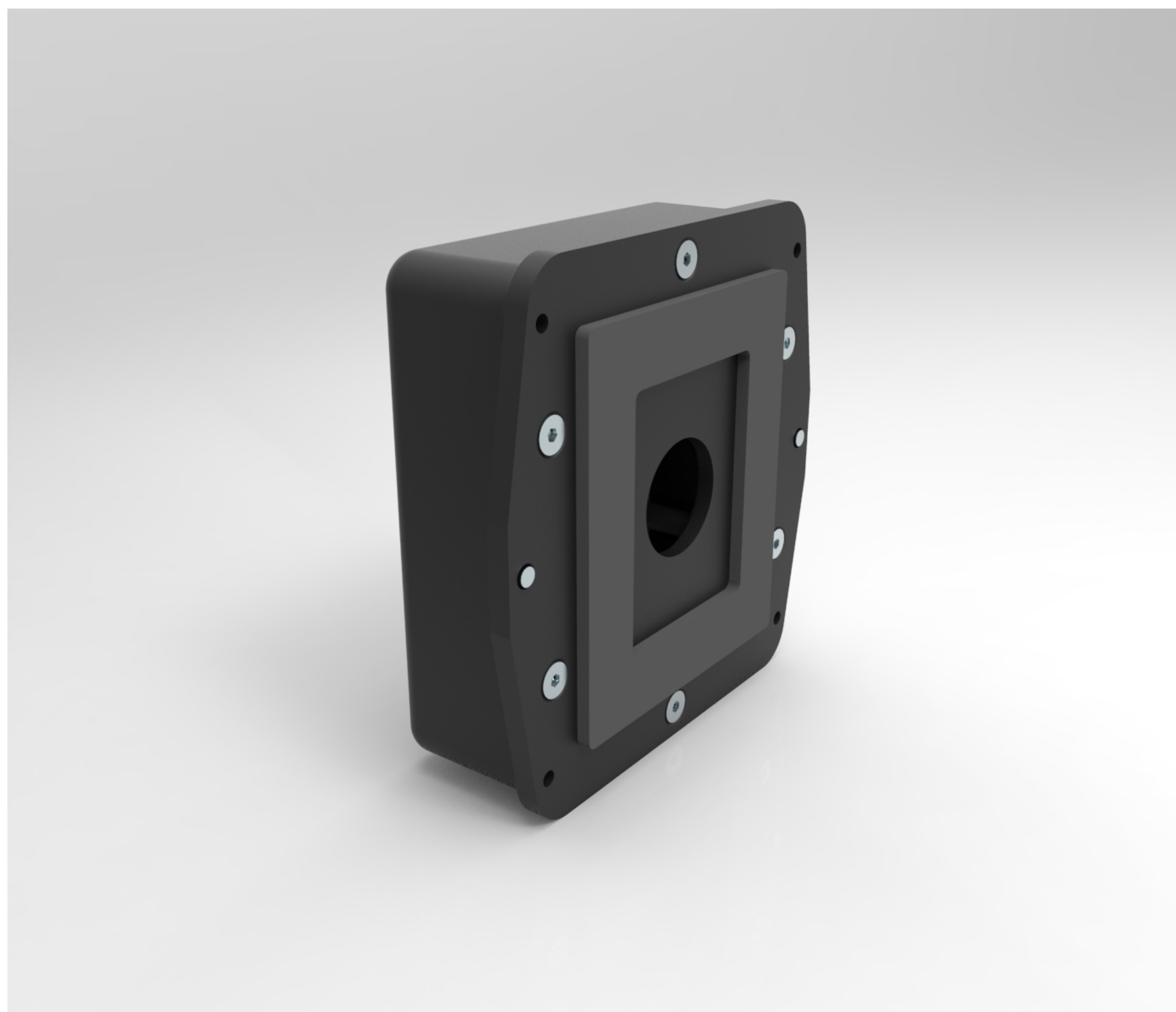


# EVT-QR-VANDAL-01

## VANDAL RESISTANT ACCESS CONTROL QR CODE READER WITH RFID CARD READER

QR-codes are modern digital credentials that can be used for temporary or permanent access control applications. One of the many advantages of using QR codes is that they can be printed out or displayed digitally on a smartphone or tablet. Users do not need to worry about carrying a card or tag credential anymore as the credential now becomes portable. They are also a contactless form of credential thereby eliminating surface contact for the person using the access control system.

Visitors can also easily be issued a QR code via a kiosk printer or electronically via email, SMS or WhatsApp. Our EvTrack Solution makes QR code access control a reality when used for temporary visitor or permanent access control applications.



Rear Cable Entry

### Vandal Resistant Construction

For areas where the reader may be exposed to vandalism or tampering, our latest QR Code Reader has a vandal resistant aluminum enclosure and is suitable for fixed access control applications inside or outside a building. Available in several colors including gold, white and black, it is ideal for corporate office, residential or VIP access control applications.

### QR Code Reading

The reader features a high speed embedded scanning engine and optical camera for reading QR codes or 1D/2D barcodes. QR code access control credentials on printed cards or digital devices such as smartphones are supported up to a distance of 300mm.

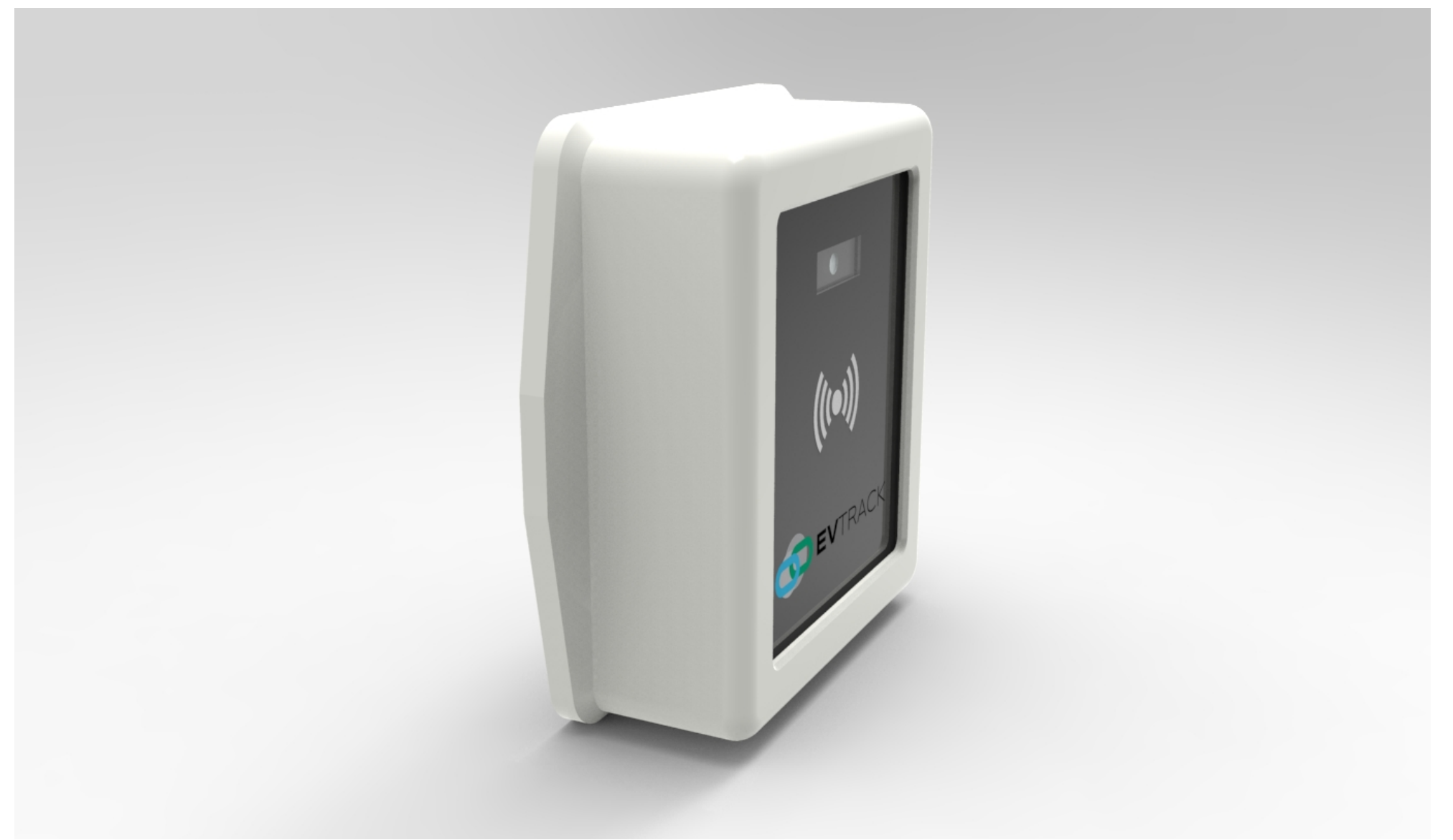
### Interface + Hardware Compatibility

Featuring a 32-Bit Wiegand Serial interface the unit is compatible with standard access/control boards that have a Wiegand Interface. The cable entry for the device is from the rear of the device which protects the cabling to the reader from tampering.

## General Features

- ✓ 1280 x 800 pixel CMOS Optical Sensor with 42° (H) & 28° (V) FOV
- ✓ Integrated Barcode Image Recognition Engine
- ✓ White LED Illumination with IR Sensor Activation
- ✓ 40-295 mm Scanning Range (QR Reading)
- ✓ 32-Bit Wiegand Interface Output
- ✓ 9-36VDC Operation (2W)
- ✓ -20°C to +60° C Operating temperature
- ✓ IP65 Weatherproof
- ✓ Integrated RFID Reader
- ✓ 50 mm to 70 mm RFID Read Range
- ✓ Compatible with ISO/IEC14443-4 Cards

## Color Options



## Product Dimension

