



EVTRACK FRONT DESK

'Digital Concierge' Access Control & Automated Visitor Solution

INTRODUCTION

Designed to automate the visitor registration process, this solution forms an integral part of the EvTrack eco-system and allows a visitor to self-register on arrival at the site. The EvTrack Front Desk solution is the ideal digital concierge and complements or replaces the security officer at the reception equating to manpower savings onsite. It also notifies the host after the registration is complete & sends a temporary QR code or OTP credential to the visitor in order to open an access control door, boom or turnstile. The solution consists of an easy-to-use touchscreen user interface installed on an Android 10" tablet with WiFi for communication.

FEATURES

- ✓ Android Tablet Compatible
- ✓ Landscape or Portrait Orientation Usage
- ✓ Utilises Front Facing Megapixel Camera for Visitor Face Capture
- ✓ Optional 1D/2D Barcode Scanner for ID Scanning
- ✓ Interfaces with 2N and Axis Hardware
- ✓ Secure Encrypted Communication with the EvTrack Server
- ✓ Remote Host Visitor Approval & Supervisor Notification
- ✓ Optional USB Temperature Screening Device

DIGITAL QUESTIONS FOR HEALTH SCREENING & COMPLIANCE

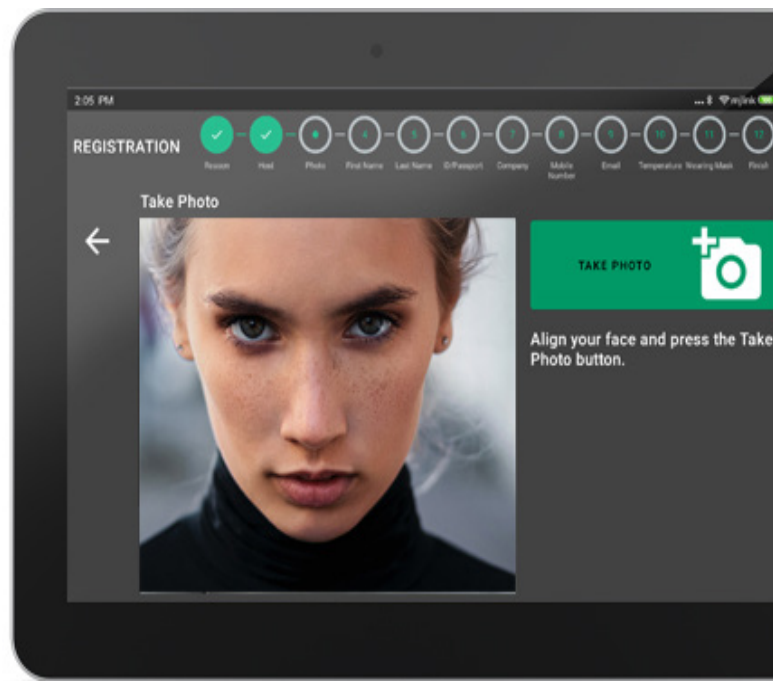
Fully customisable this function allows the user to create unique digital question pages for health & safety, COVID19 screening or company corporate compliance that the visitor can answer via the touchscreen display. As an example, 'does the visitor accept the site's rules and regulations'. Each completed registration form is saved as an individual agreement with a unique transactional ID and can be exported by authorised users through the EvTrack Web management portal.

VISITOR PHOTO CAPTURE

As part of the of the visitor registration process, the EvTrack Front Desk kiosk device can use a front facing in-built camera to capture a hi-resolution photo of the person standing in view of the camera. This is cropped, compressed and uploaded to the EvTrack server (in the cloud or on-premise) combined with the other captured data including name, surname, mobile number visitor destination and host.

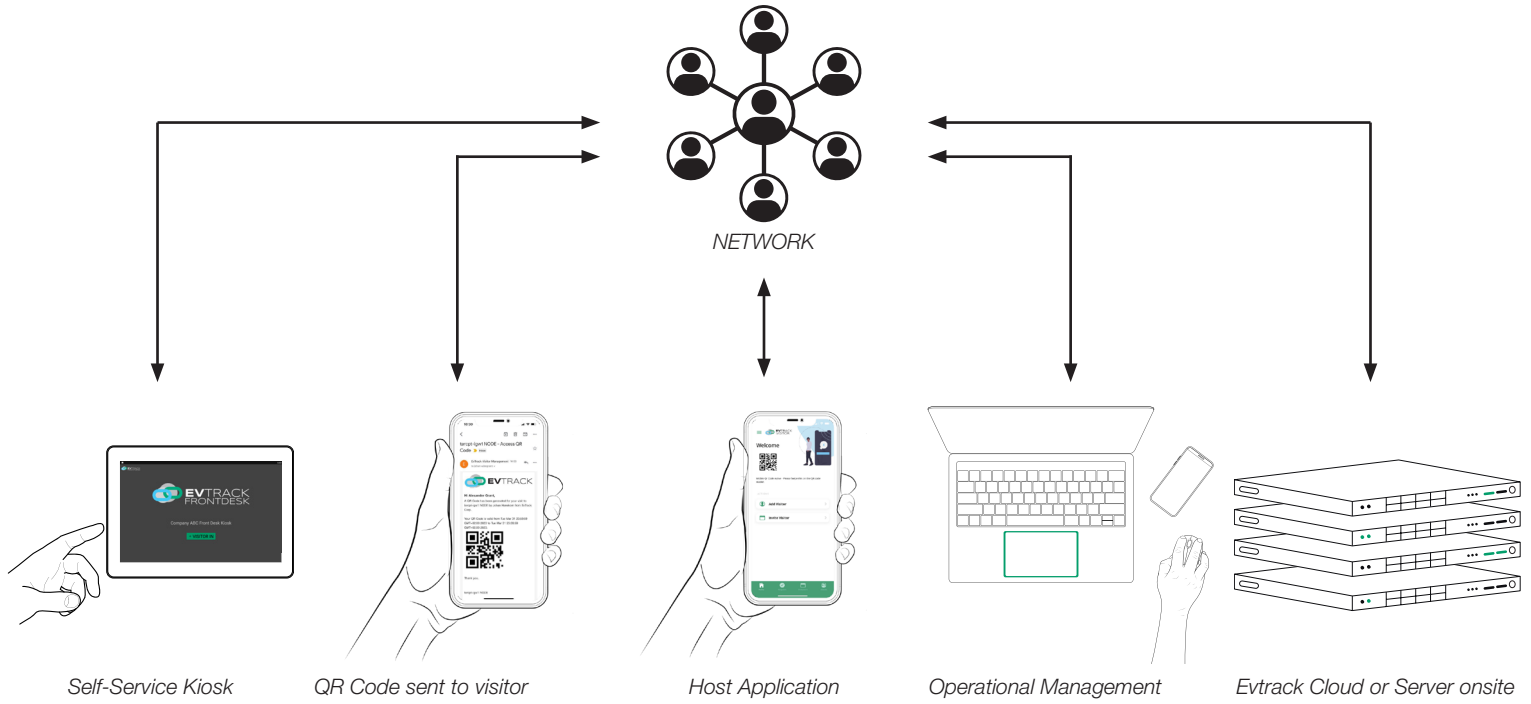
HOST APPROVAL

As part of the automated visitor process, a message is sent to the host with a photo and name of the visitor who has just been registered on the kiosk. This message is received by the host via email, SMS or through the EvTrack client smartphone application. The host can then choose to approve or deny the person access. After which the visitor receives a temporary access control credential to allow them access into the building via an access control gate, pedestrian turnstile, vehicle boom, elevator or access control door. Extensive support is provided for direct interfacing with IP Access Control Hardware from 2N and Axis.

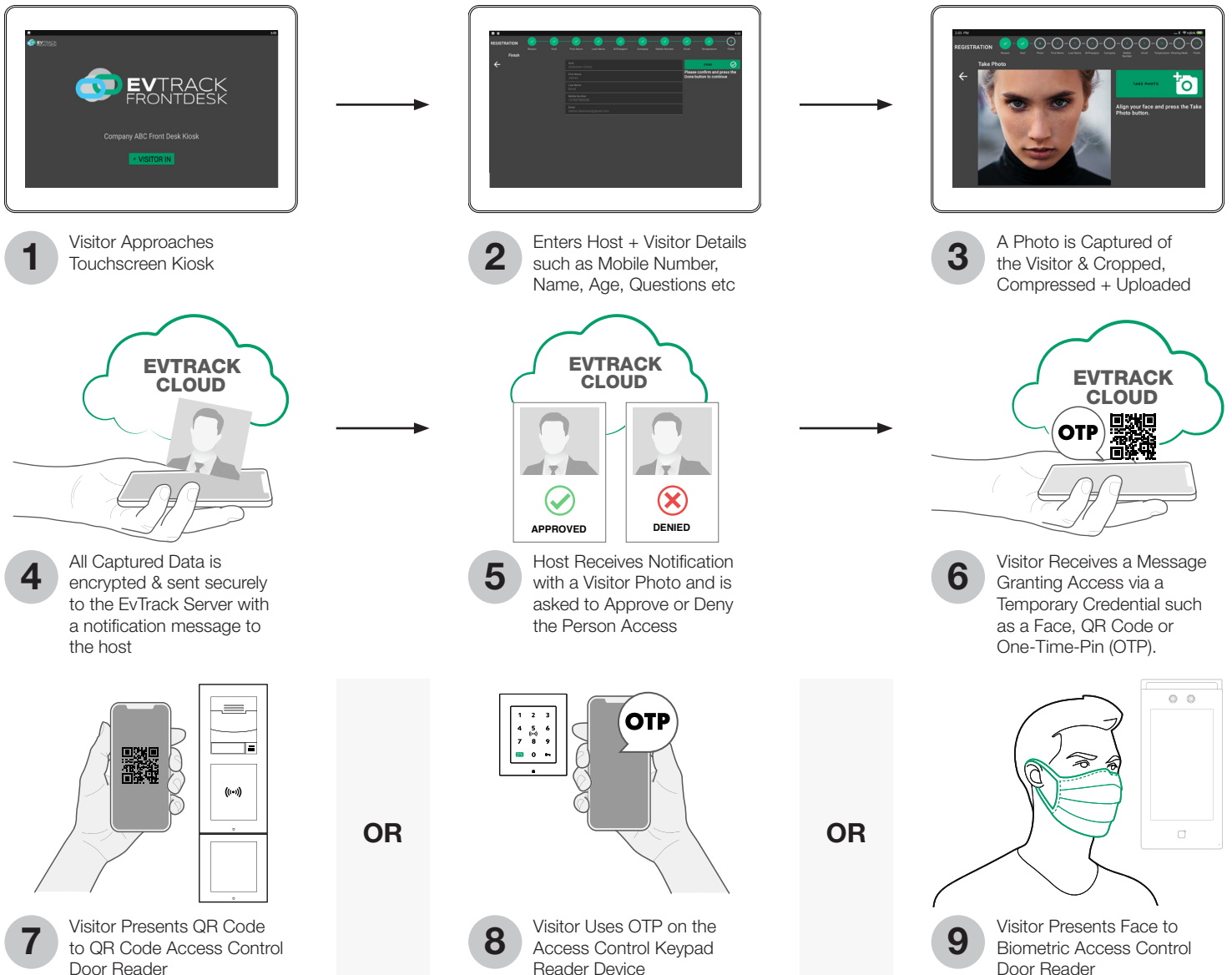


Visitor Photo Capture

SYSTEM ARCHITECTURE



WORKFLOW



COMPATIBLE HARDWARE

DEVICE	NEWLAND 10" Kiosk
Display Type	10.1" WXGA, 1280*800 TFT LCD display
Touchscreen	10 points Capacitive Touch
Screen Orientation	Landscape or Portrait
Operating System	Android 7.1
Processor	RK3368, Octa-core Cortex-A53; up to 1.5 GHz
Memory	2GB RAM
WiFi	IEEE 802.11 b/g/n/ac
Wired Ethernet	10/100/1000Mbps Ethernet Interface (RJ45)
Barcode Scanner	Yes Integrated 1D/2D Barcode Scanner
NFC Reader	Yes Integrated
Front Facing Camera	Yes 5 Megapixel
Operating Temperature	0°C to 40°C
Mounting	75x75mm VESA
Dimensions	252 × 184 × 33mm
Power	12VDC or PoE



DEVICE	ELO 10" Kiosk
Display Type	10.1" WXGA, 1280*800 TFT LCD display (400 nits)
Touchscreen	TouchPro® PCAP (Projected Capacitive) - up to 10 touches
Screen Orientation	Landscape or Portrait
Operating System	Android™ 8.1 Oreo™ with Google™ Play Services
Processor	Qualcomm® Snapdragon™ APQ8053 2.0GHz Octa-Core Processor
Memory	3GB RAM
WiFi	IEEE 802.11 b/g/n/ac
Wired Ethernet	10/100/1000Mbps Ethernet Interface (RJ45)
Barcode Scanner	Optional External Unit
NFC Reader	Optional External Unit
Front Facing Camera	Yes 2 Megapixel
Operating Temperature	0°C to 40°C
Mounting	75x75mm VESA
Dimensions	255 x 181 x 25.1mm
Power	12VDC or Optional PoE



DEVICE	SAMSUNG GALAXY A7 10" TABLET
Display Type	10.4" WUXGA, 2100*1200 LCD display
Touchscreen	Capacitive Touch
Screen Orientation	Landscape or Portrait
Operating System	Android 10
Processor	Octa-core 2 GHz
Memory	3GB RAM
WiFi	IEEE 802.11 b/g/n/ac
Wired Ethernet	N/A
Barcode Scanner	N/A (External 1D/2D Barcode Scanner via USB-C Hub)
NFC Reader	N/A
Front Facing Camera	Yes 5 Megapixel
Operating Temperature	0°C to 40°C
Mounting	Requires a Kiosk Case
Dimensions	157 × 247 × 7mm
Power	USB-C or Battery

