

SAFR, AXIS & EVTRACK INTEGRATION

Providing Access Control & Temporary
Visitor Management via Facial Recognition



INTRODUCTION

The post COVID-era has seen a major increase in the demand for fast contactless access control for apartment buildings, gated security estates and corporate offices. EvTrack's latest integration combines AXIS hi-definition video intercom door stations with SAFR's facial recognition server platform to provide users with an enterprise-level access control and visitor management solution using facial biometric credentials.

The solution can be used for both pedestrian and vehicular access control with support for permanent face credentials for residents, employees and tenants. Temporary access control is also possible via use-limited or time-expiry face credentials for visitors or temporary contractors that are enrolled via a guard device, web link or self-service kiosk.

SOLUTION FEATURES

- High Speed Facial Recognition Access Control
- Optional Anti-Spoofing Liveness Detection
- Seamless Visitor to Access Control Processing
- Separate Employee, Visitor & User Access Control Databases
- Employee/User Face Credential Pre-Registration via Weblink or Web Portal
- Visitor Registration Face Capture via Self-Service Kiosk or Guard Device
- Gate or Door Control via AXIS Hardware Device relay
- Configurable Access Control Lists, Access Control Points, Locations and Schedules
- Access Control & Visitor Event logging and Reporting

INTRODUCTION

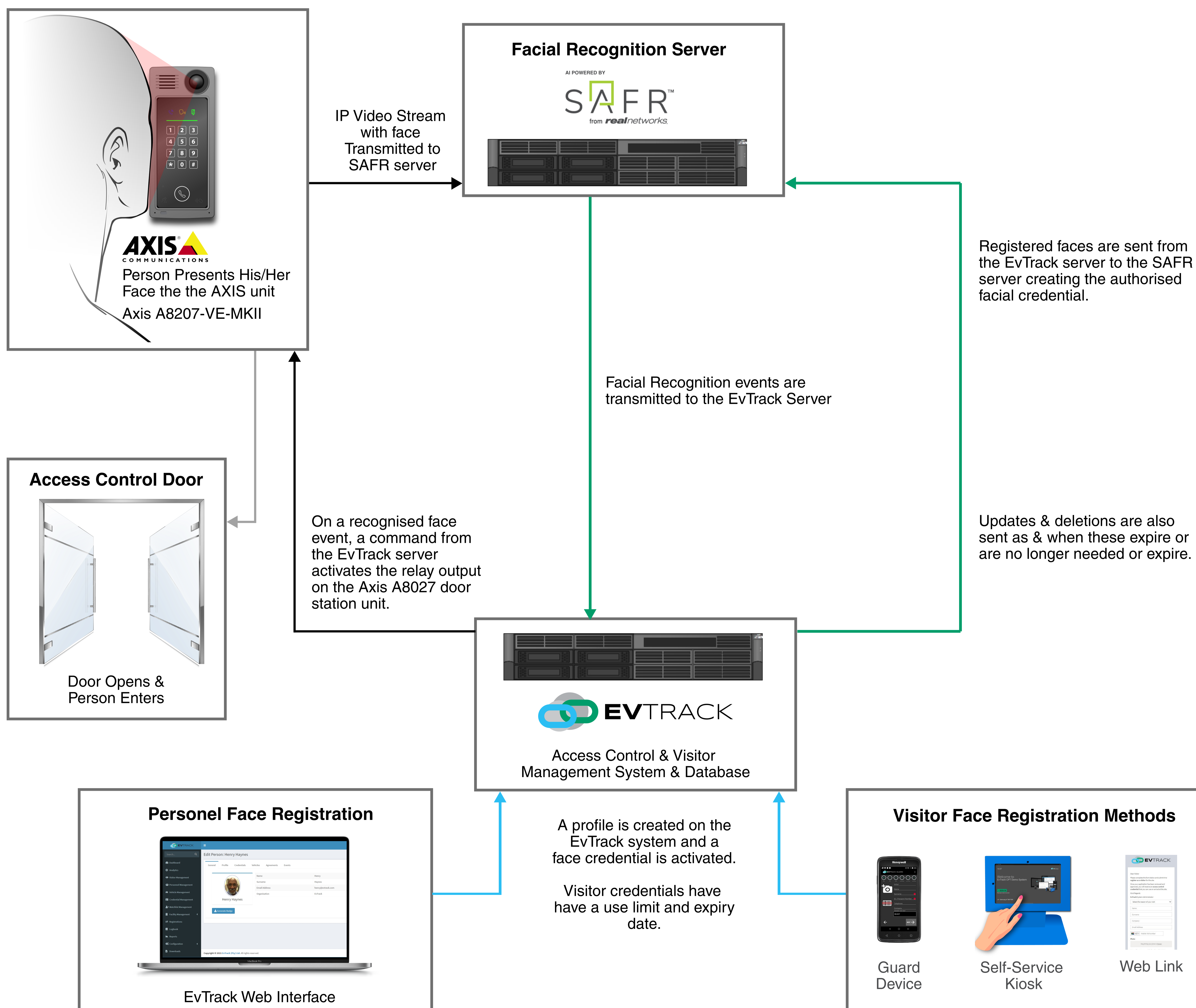
A typical system consists of a SAFR server running a licensed version of the SAFR software communicating with an onsite or cloud-based EvTrack access control server via an API (Application Programming Interface).

EvTrack acts as a 'virtual' access controller storing credentials, access control points, access control lists, locations and access control time schedules. User, personnel and visitor face credentials are managed by EvTrack and pushed through to the SAFR server once created. Once these expire, or they are modified or deleted, then they are also removed from the SAFR server.

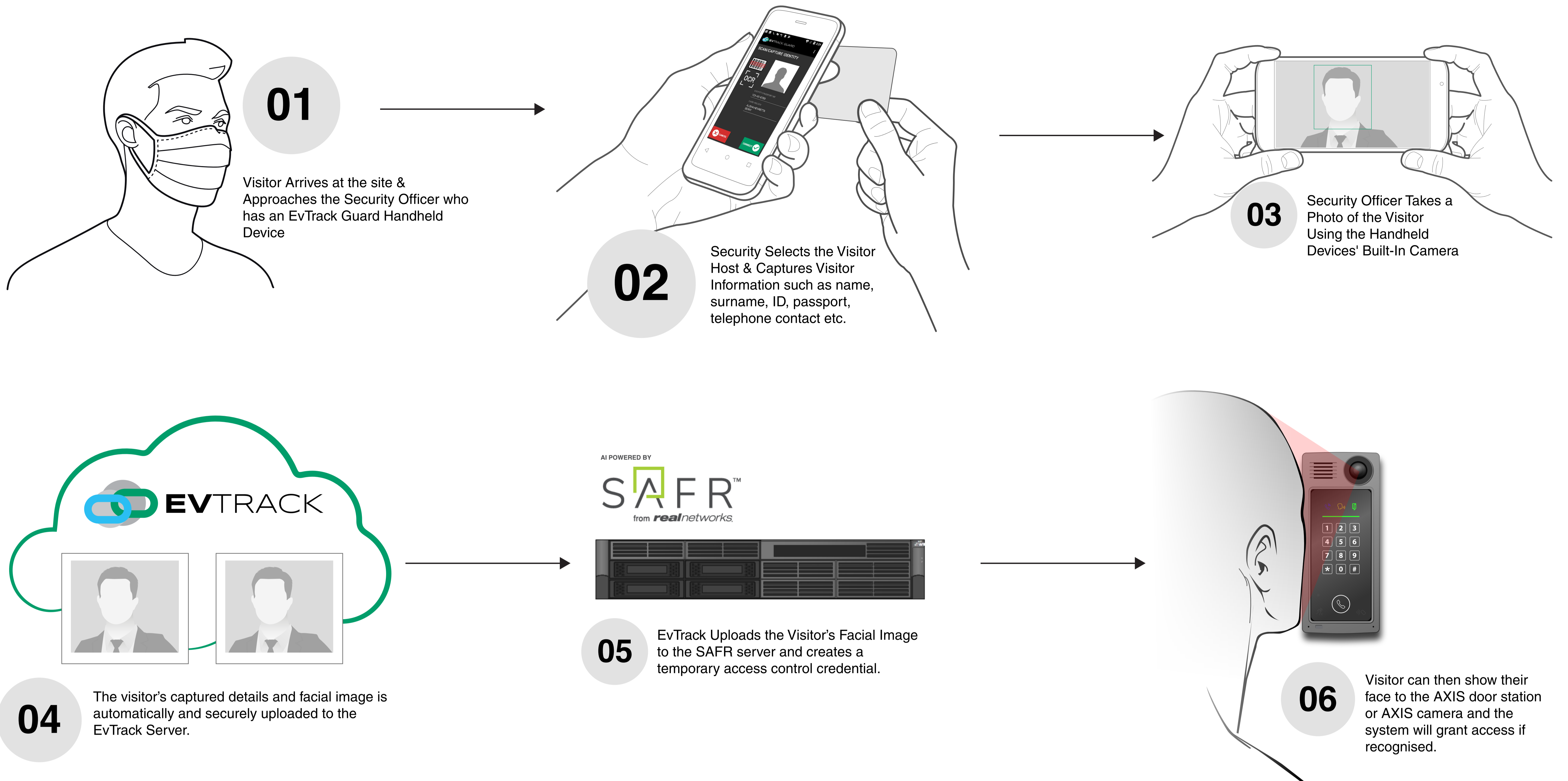
The SAFR facial recognition server constantly 'scans' for recognised faces via the incoming video feed and converts these to events which are sent transparently to the EvTrack server to action.

The third part of the integration is the AXIS camera or AXIS intercom door station which provides both the video stream for processing by the SAFR server, as well as the hardware door control once an event has been received that an authorised facial credential has been 'recognised'. On receipt of this credential event, the EvTrack server sends a command to the AXIS device to trigger the relay which then opens the access control door or vehicular gate/boom and grants the person access to the site.

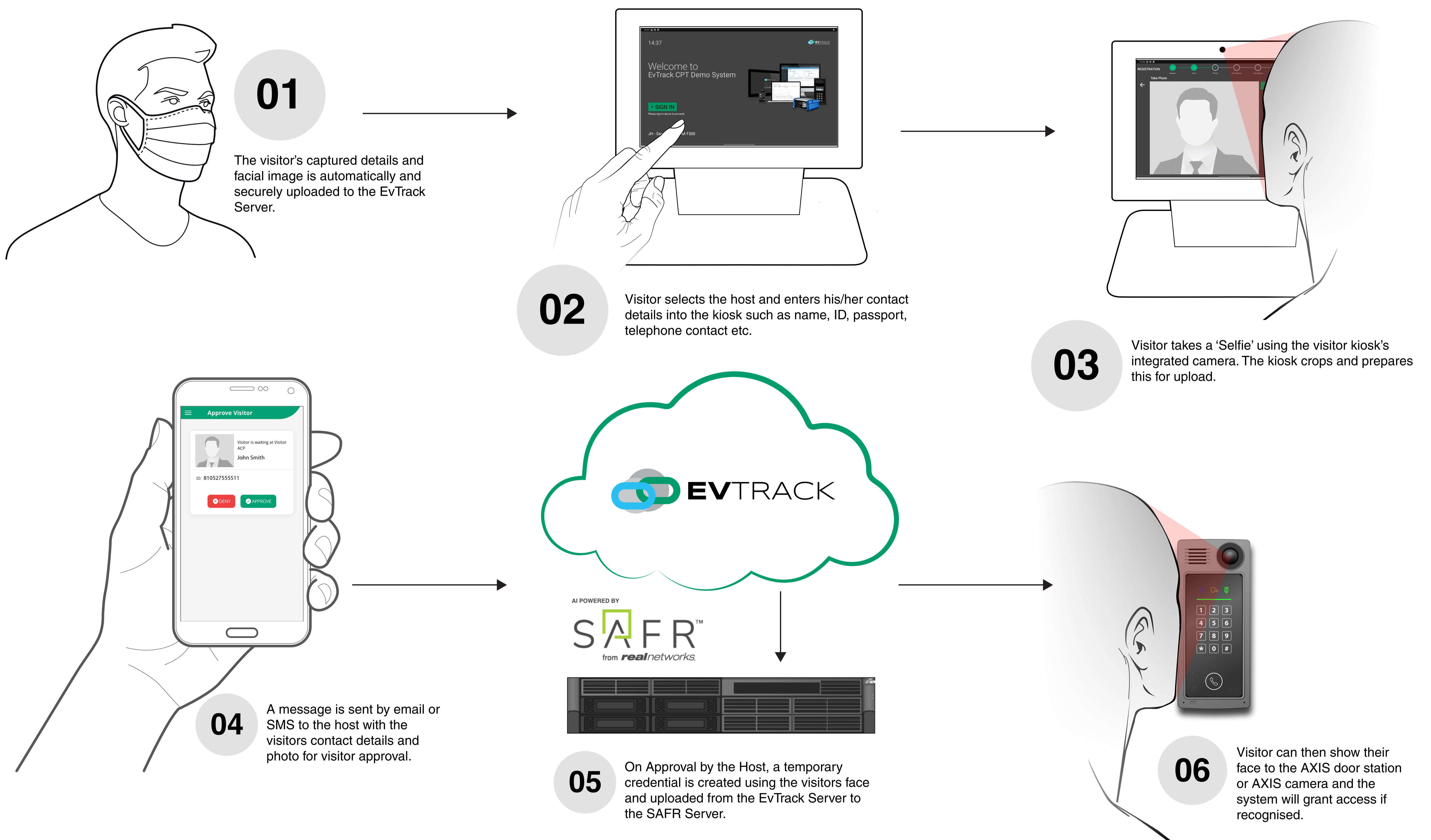
SAFR INTEGRATION SYSTEM ARCHITECTURE



EvTrack Guard Device Visitor Registration & Facial Capture For Temporary Access



Self-Service Kiosk Visitor Registration Facial Capture & Visitor Host Approval



AXIS A8207-VE Mk II – HI-DEFINITION VIDEO/AUDIO DOOR STATION WITH I/O

Part of the AXIS range of IP access control and video hardware devices, the A8207-VE MKII has all the required features for security hardware door or gate control including.

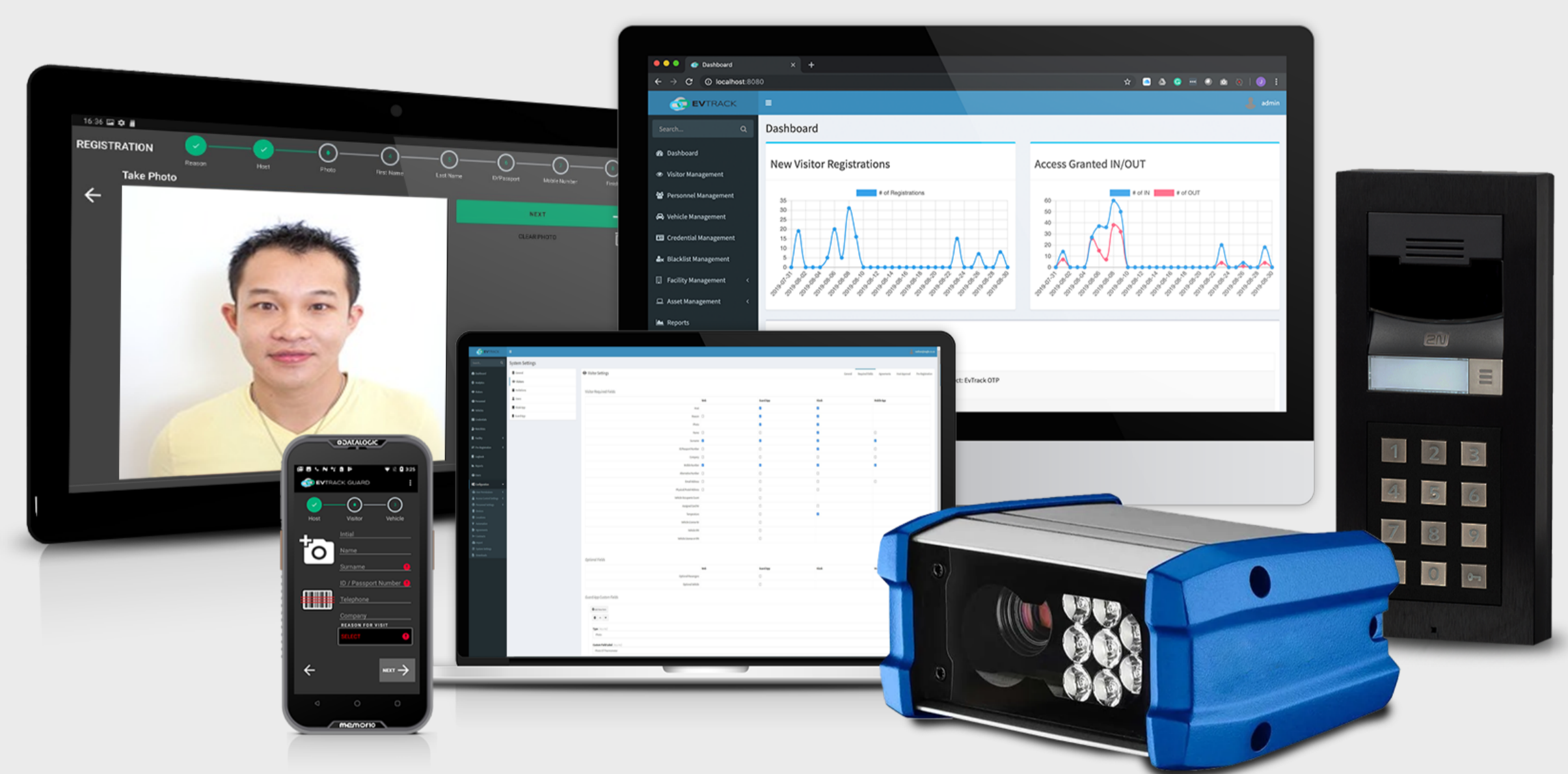
- 6 Megapixel Wide Dynamic Range Camera
- 2-Way Audio Communication with Noise Reduction
- Hardware Alarm Inputs & Relay Outputs
- IP66 Weatherproof & IK08 Rating
- -40 to 55 °C Operating Temperature
- PoE or 12VDC Powered



ABOUT EVTRACK

EvTrack is an access control and visitor management software product which provides a solution for permanent or temporary access control applications. It features an eco-system which allows the use of different forms of access control credentials to co-exist within a single platform. The system is managed through an easy-to-use web interface with no plugins required to be installed.

- AXIS and 2N IP Hardware Support
- Cloud Based or On-Premise Server Versions
- Support for RFID, QR-Code, Pin, LPR & Face Credentials
- Separate Visitor, User & Personnel Databases
- Reports exportable as pdf, Excel or CSV
- Pre-registration web links for easy enrolment
- Data analytics showing access control point activity, visitors by day and the most popular hosts and visitors
- Visitor Registration via Self-Service Kiosk, Guard Device or Reception Web Portal
- Access Control & Visitor Badge Creation and Printing



ABOUT SAFR FACIAL RECOGNITION

SAFR from RealNetworks is a visual intelligence platform specializing in face and person-based computer vision optimized for real-world performance.

A US-based public company, RealNetworks has a global presence.

- NIST Tested
- Fast < 100 ms recognition speeds
- Liveness detection
- Accurate 99.87% LFW recognition accuracy, 98.85% for masked faces
- Unbiased - Least biased, globally available recognition algorithm
- Secure - Built for privacy with AES-256 encryption and offline deployment options

AI POWERED BY

