



and



# INTEGRATION NOTE

Rev 1.0 – Dec 2023

## Introduction

EvTrack's Suprema Integration provides seamless integration of EvTrack's visitor management solution with Suprema's BioStar 2 Open Integrated Security Platform.

This solution provides automated visitor to physical access control management with EvTrack streamlining the access control process for temporary guests, visitors and contractors.

It is ideal for sites that utilise Suprema IP Access Control Hardware and where the customer wants to integrate Visitor Management and Access/Control into one unified platform.

EvTrack's server is available as a cloud-based or on-premise deployment and will communicate to Suprema's BioStar2 server via a **REST API** interface.

## What is BioStar2 ?



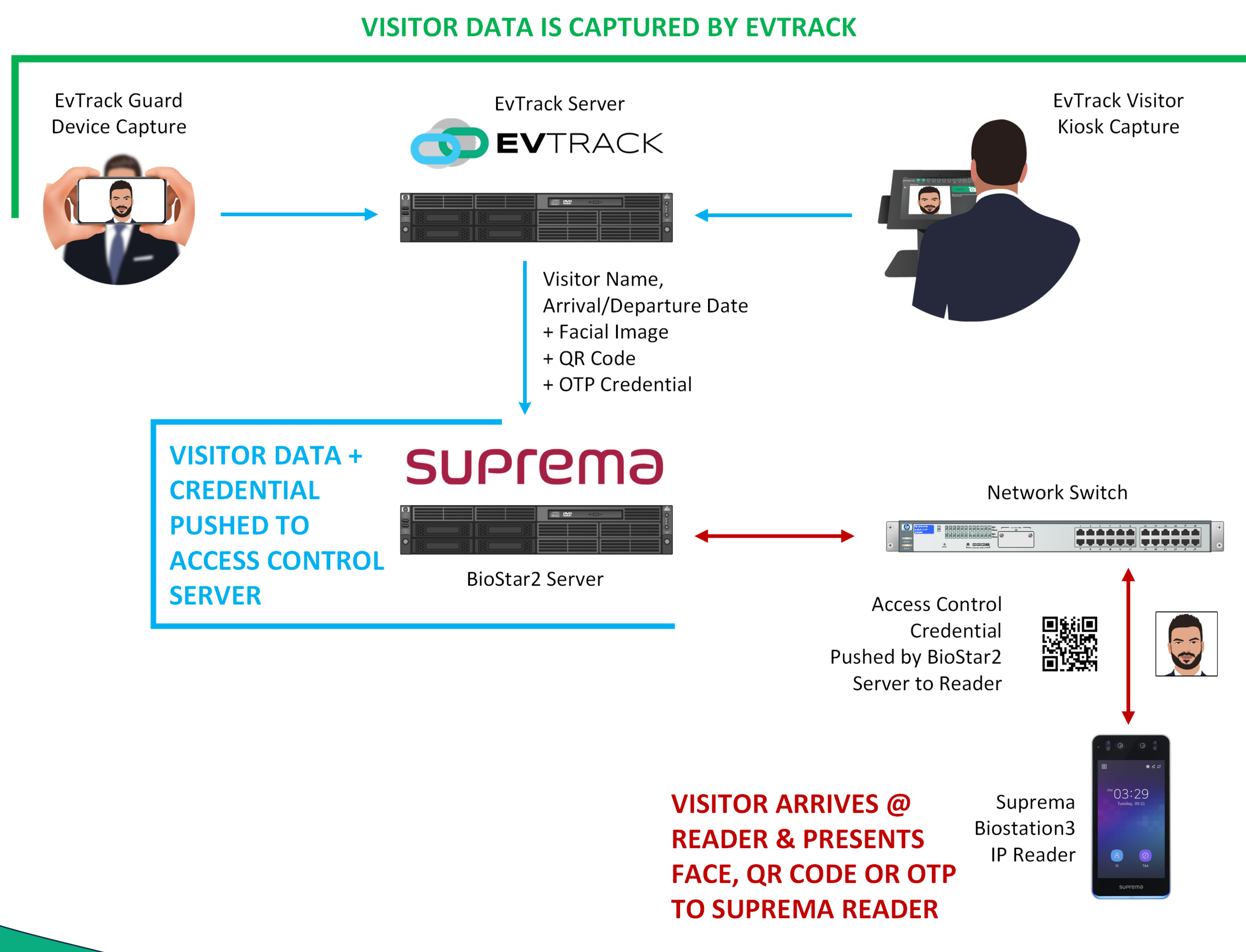
BioStar 2 is a web-based, open, and integrated access control software platform provided by Suprema.

It has been designed as an off the shelf software solution that users of **Suprema IP Access Control hardware** can use for all sites, whether a small office or a global corporation.

Various sized packages are available depending on the size of the site and the number of connected devices. It also features elevator control, both centralized and de-centralized architecture and interfacing with a variety of NVRs and/or IP cameras. A time/attendance module is also an option.

Its **REST-API** allows it to be integrated with 3<sup>rd</sup> party software solutions such as EvTrack's Visitor Management solution.

## How Does the Integration Work



## Step By Step Visitor to Access/Control Integration

Step 1: A visitor arrives at the site (ad-hoc or walk-in) or is pre-registered through EvTrack before arrival.

Step 2: With an ad hoc visitor's arrival at the site, the visitor's details are captured either through the EvTrack FrontDesk Self-Service Visitor Kiosk, EvTrack Guard handheld device or via the EvTrack web portal interface.

Step 3: A profile with credential and start and end date of the visit as well as access control privileges is then generated by the EvTrack server.

Step 4: This data is sent over the network to the Suprema BioStar2 server where the appropriate credential with cardholder details, permissions and credential is created. Cardholder groups can be mapped by the system administrator so that they match the required group on the BioStar2 side.

Step 5: The BioStar2 server sends the relevant credential to the Suprema Access/Control Reader.

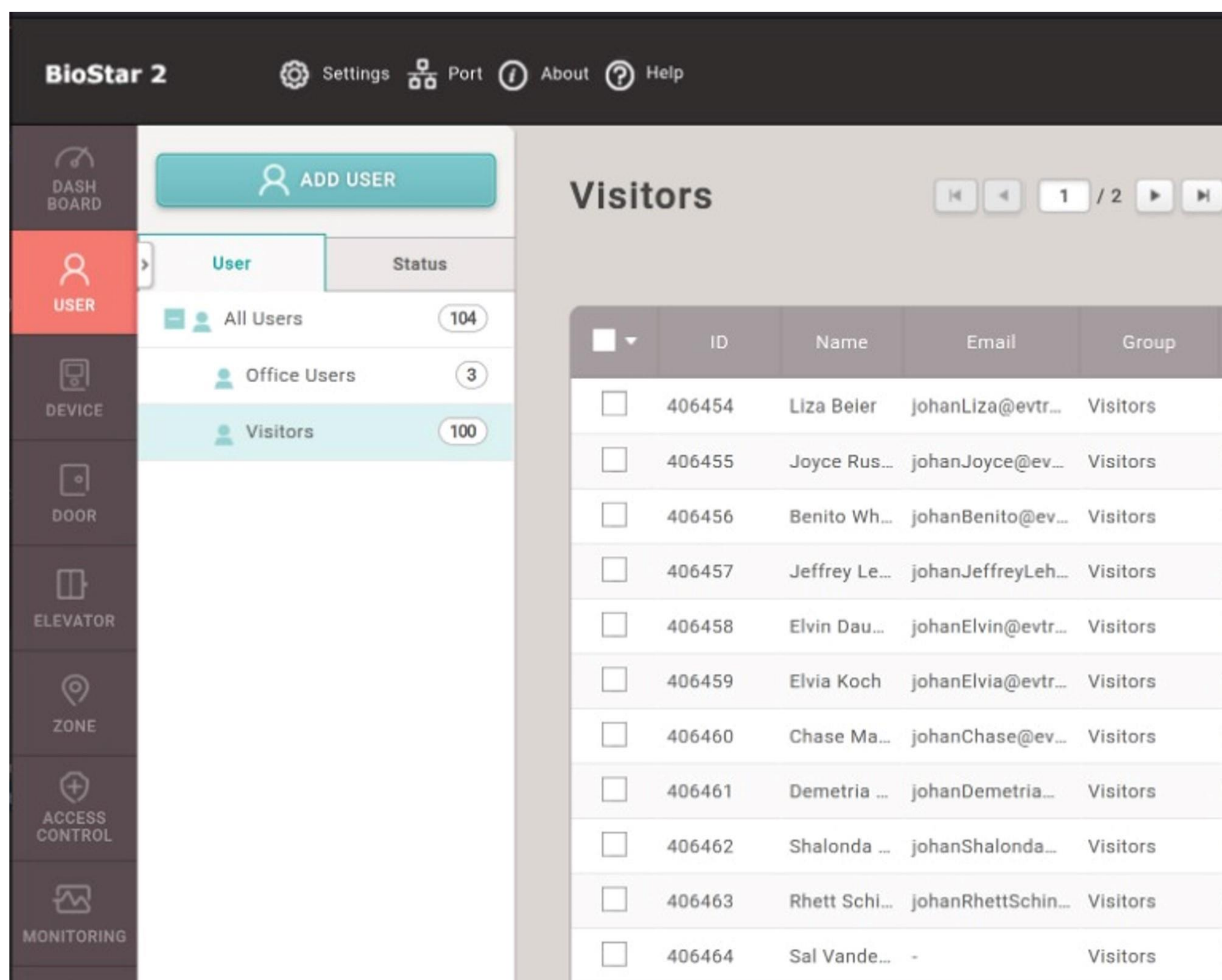
Step 6: Visitor presents credential and is granted access.

For pre-registered visitors, credentials are created prior to the visitor's arrival and are already pre-loaded onto the EvTrack Server and then onto the Suprema BioStar2 Server / Readers.

### What data is transferred between EvTrack & Suprema's BioStar2 Software ?

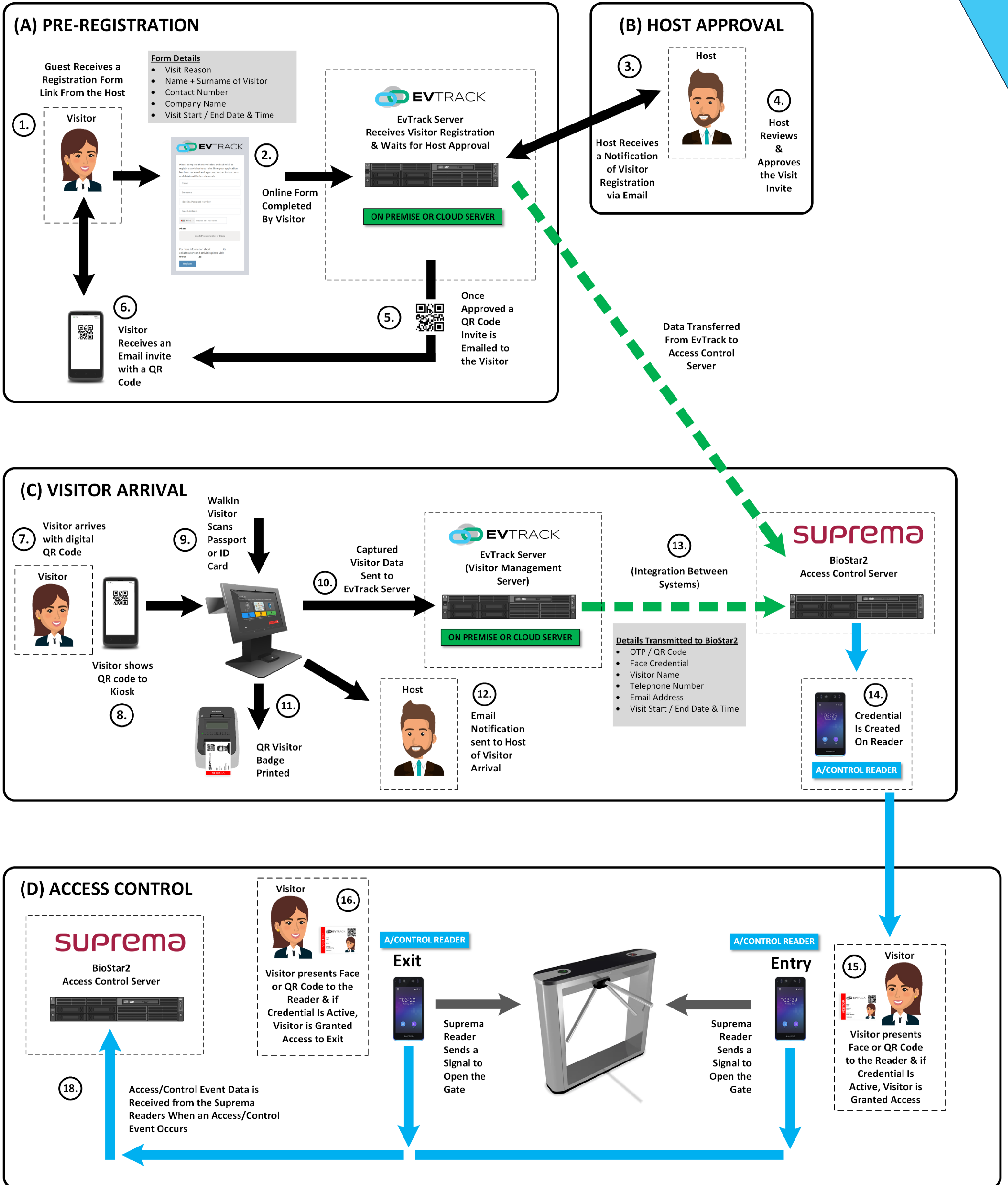
- Cardholder Info (First Name, Last Name, Mobile Number, Email Address).
- Visitor Photo.
- Face Credential.
- QR Code or One-Time-Pin.
- Cardholder Group (i.e the Access Control Group the Credential is Mapped to).

### EvTrack Visitor Data Displayed in BioStar2



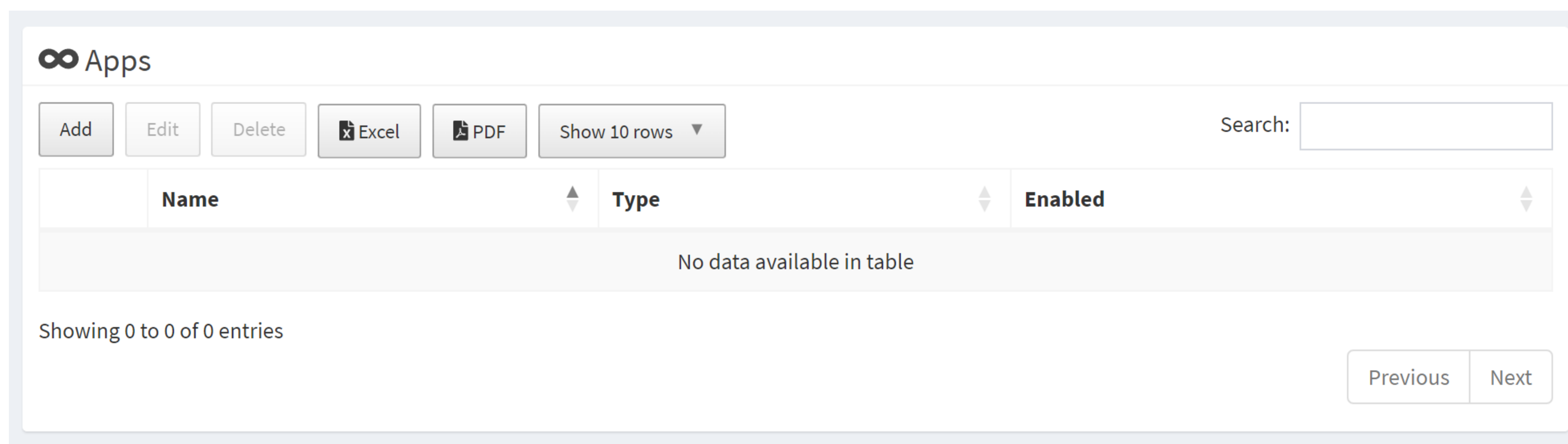
ID	Name	Email	Group
406454	Liza Beier	johanLiza@evtr...	Visitors
406455	Joyce Rus...	johanJoyce@ev...	Visitors
406456	Benito Wh...	johanBenito@ev...	Visitors
406457	Jeffrey Le...	johanJeffreyLeh...	Visitors
406458	Elvin Dau...	johanElvin@evtr...	Visitors
406459	Elvia Koch	johanElvia@evtr...	Visitors
406460	Chase Ma...	johanChase@ev...	Visitors
406461	Demetria ...	johanDemetria...	Visitors
406462	Shalonda ...	johanShalonda...	Visitors
406463	Rhett Schi...	johanRhettSchin...	Visitors
406464	Sal Vande...	-	Visitors

# EvTrack Visitor to Access Control Workflow – Pre-Registered



## How Does One Add an EvTrack / Suprema BioStar2 Integration to EvTrack

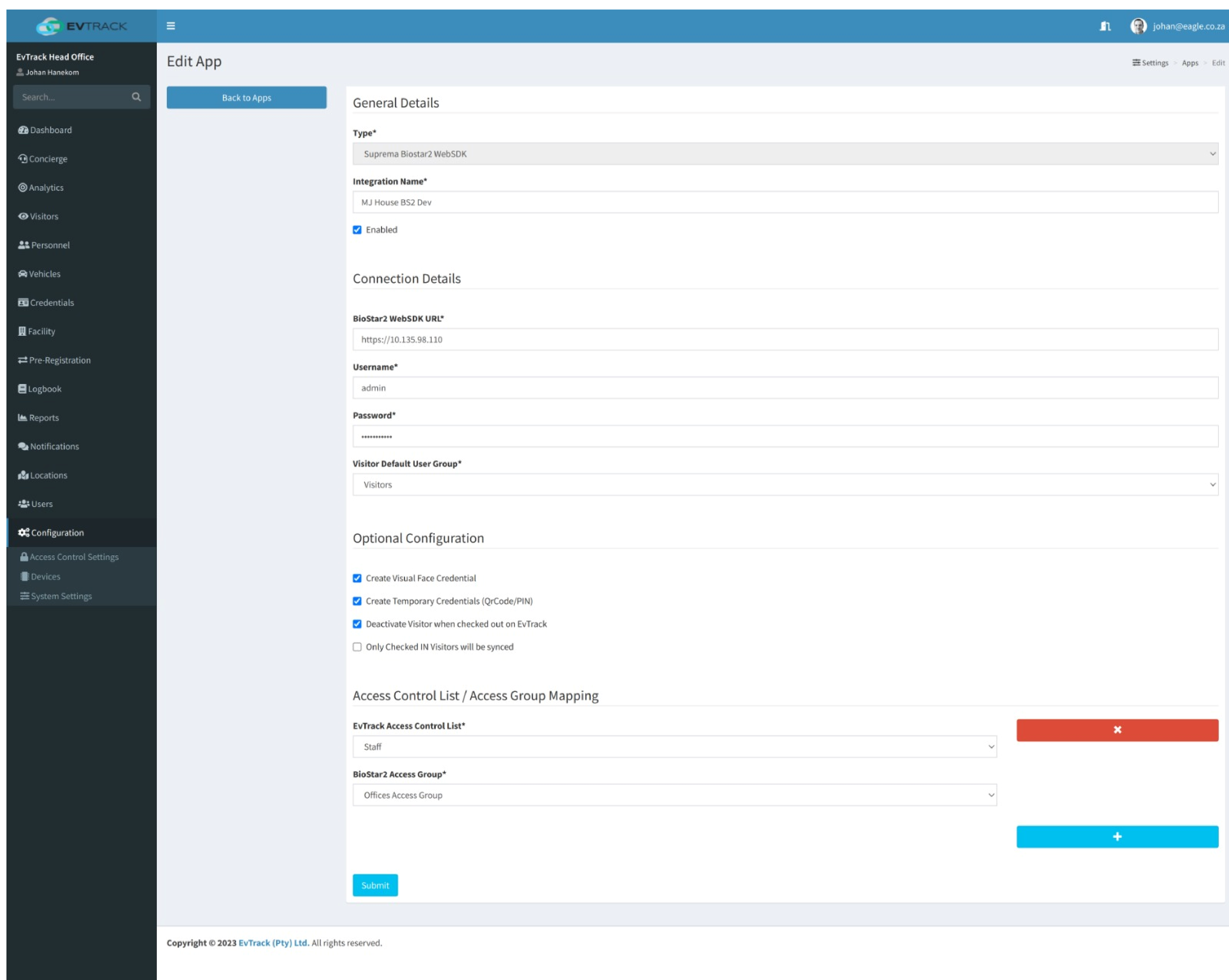
Adding the integration within EvTrack is extremely easy. One goes to settings and chooses an app called EvTrack/Biostar2 integration. Once added the configuration page below needs to be completed.



### EvTrack / Suprema BioStar2 Configuration Page

The screenshot below shows the settings need to be configured within EvTrack to allow the data transfer to the BioStar 2 system.

- BioStar2 WebSDK Server URL Address
- Server Username/Password**
- Default Visitor Access/Control Group
- Tickbox For Creating a Face Credential Using the Captured Visitor's Photo**
- Tickbox For Creating a QR Code and One-Time-Pin (OTP)
- Access/Control Group Mapping Between the Systems**



# On-Premise (Onsite) Server System Architecture



# Cloud Based System Architecture



Suprema is a leading global provider of access control, time & attendance and biometrics solutions.

By combining world renowned biometric algorithms with superior engineering, Suprema has introduced innovations to the security industry over the last decades. Suprema's extensive range of portfolio includes biometric access control systems, time & attendance solutions, fingerprint live scanners, mobile authentication solutions and embedded fingerprint modules.

Suprema is named the world's top 50 security manufacturers and has a worldwide sales network in over 140 countries with no.1 market share in biometric access control in EMEA region.

Some of the Suprema hardware products include:

- **BioStation 3** - Facial Biometric IP Reader
- **FaceStation F2** - Facial Biometric IP Reader
- **FaceStation 2** - Smart Facial Biometric IP Reader
- **Xpass 2** - RFID & Pin IP Reader
- **CoreStation** - Intelligent Biometric Controller



## ABOUT EVTRACK

EvTrack is a visitor management software solution with an access control core. It provides a solution for permanent or temporary access control applications. Featuring an eco-system which allows the use of different forms of access control credentials to co-exist within a single platform. The system is managed through an easy-to-use web interface with no plugins required to be installed.

- Cloud Based or On-Premise Server Versions
- Support for RFID, QR-Code, Pin, LPR & Face Credentials
- Dedicated Visitor Profile for Each Visitor
- Visitor Dashboard with Expected and Current Visitors
- Reports exportable as Pdf or CSV
- Pre-registration web links for easy visitor pre-registration
- Data analytics showing site access control & visitor activity,
- Visitor Registration via Resident App or Guard Device
- Host Approval via Email or Push Notification
- Free smartphone client application with Host Approval Function, Visitor Log, Visitor Invites & More (Cloud Only)



## EvTrack Self-Service Visitor Kiosk Hardware

**MK5/6/7 Kiosk**



**VIP02 Kiosk**

